

An iceberg floating in a dark blue ocean under a cloudy sky. The tip of the iceberg is visible above the water, while the much larger, submerged part is visible below the surface. The text is overlaid on the submerged part of the iceberg.

# CURRENT ISSUES IN EMERGENCY MANAGEMENT

October 6-7, 2009

Doug Wright

Recovery Bureau

# CURRENT ISSUES IN EMERGENCY MANAGEMENT

October 6-7, 2009

## Some Recovery Bureau Facts:

- All Recovery staff paid by State Management Cost (SMC Cat Z) funds
- Pre-04 (99-04) There were 9 declarations – only 49 Project Worksheets left to close all 9 disasters
- Thirty (30) declarations from 1999 to present
- Seven (7) wildfire declarations

# CURRENT ISSUES IN EMERGENCY MANAGEMENT

October 6-7, 2009

- 49,933 Project Worksheets have been written since 1999
- Not counting 7 Wildfire Declarations
- 73,097 total number of versions in system for 04/05
- 3,420 Project Worksheets as of 9/11/09 not closed in NEMIS
- 215 of these in FEMA review

# CURRENT ISSUES IN EMERGENCY MANAGEMENT

October 6-7, 2009

- 20% PW closure swing (60/40) in past year
- Goal is 25% next year
- Approximately \$400 million remains to be pushed out
- Contractor assisting in PW closure activities
- Is your jurisdiction due any of these funds

# CURRENT ISSUES IN EMERGENCY MANAGEMENT

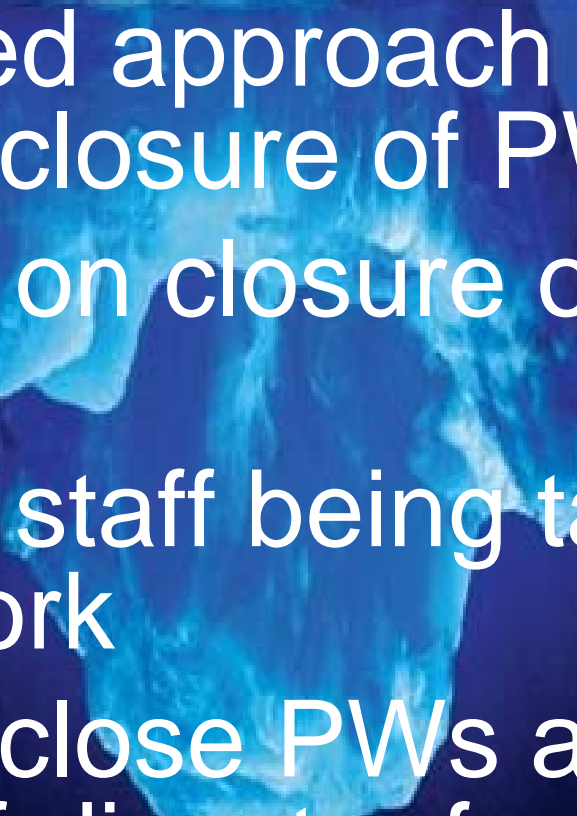
October 6-7, 2009

- Clock ticking on closure of 04/05 disasters
- 8 year period allowed for closure of PWs



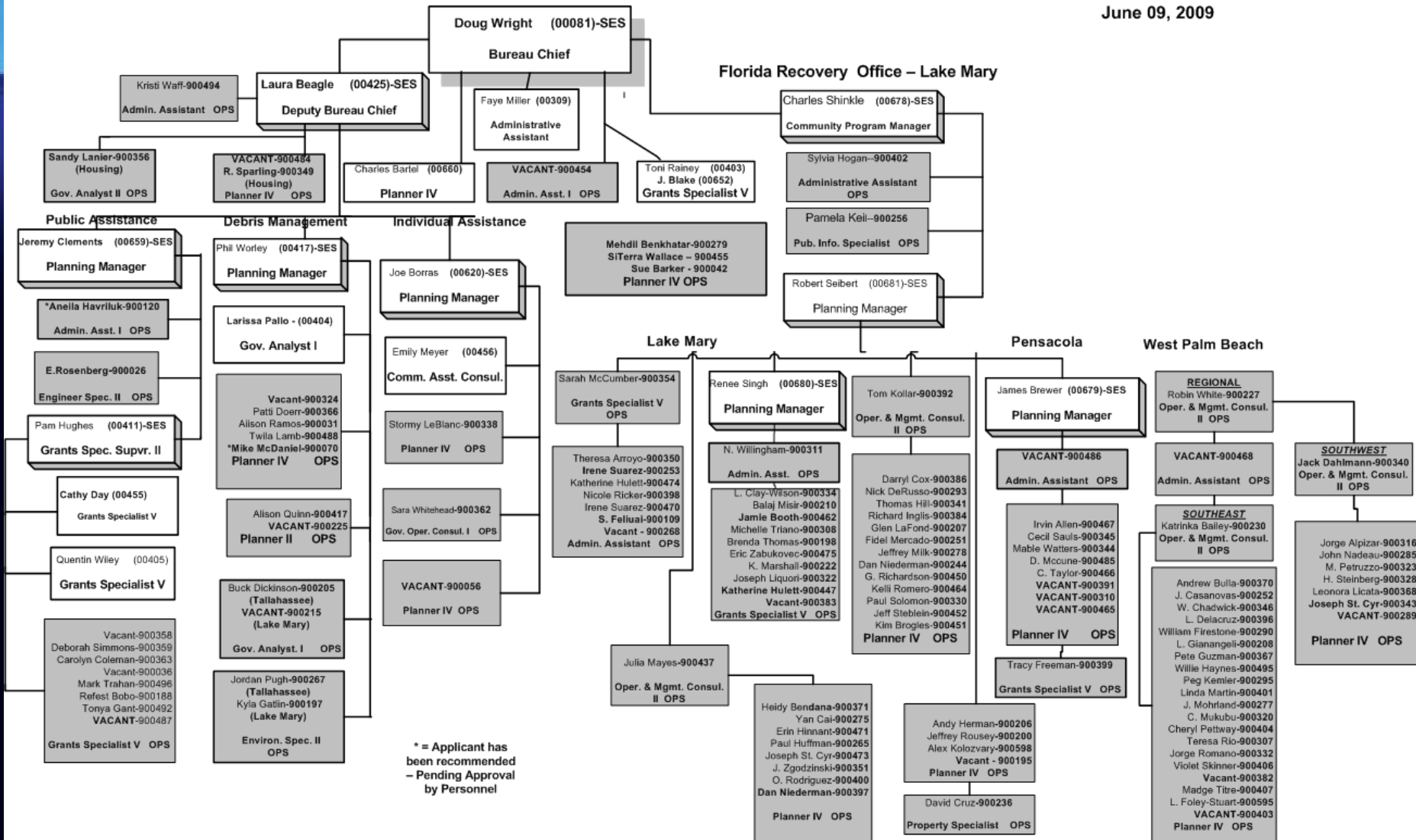
# CURRENT ISSUES IN EMERGENCY MANAGEMENT

October 6-7, 2009

- 
- An iceberg floating in the ocean, with only a small portion visible above the water surface. The background is a blue sky with light clouds. The iceberg is white and jagged, with a large, dark shadow cast on the water below it, symbolizing hidden or underlying issues.
- Accelerated approach underway regarding closure of PWs
  - Emphasis on closure of applicants
  - Additional staff being tasked with closure work
  - Goal is to close PWs and get balance of disaster funds to applicants

# Current Organization Chart

June 09, 2009



# CURRENT ISSUES IN EMERGENCY MANAGEMENT

## October 6-7, 2009

By Status	fy 2008-09		fy 2009-10
	Filled	Vacant	
CS/SES	18	0	18
OPS	122	26	122
Consultants	30	0	30

By Location	fy 2009-10
Tallahassee*	40
LakeMary*	55
P.A.C.'s in Field*	45

\* *Does not include consultants*

# CURRENT ISSUES IN EMERGENCY MANAGEMENT


October 6-7, 2009

## Available Recovery Programs

- Public Assistance
- Public Assistance Grants
- Hazard Mitigation Grants
- Pre-Disaster Mitigation Grants
- Community Disaster Loans
- Firefighting on Federal Property
- Fire Mgt Assistance Grants

# CURRENT ISSUES IN EMERGENCY MANAGEMENT

October 6-7, 2009

- 
- An iceberg floating in the ocean, with a small tip above the water and a much larger, jagged mass submerged below. The background is a blue sky with light clouds and a dark blue sea.
- Individual Assistance
  - Individuals & Households Program
  - Disaster Unemployment Assistance
  - Dislocated Worker Activities
  - Public Safety Officer's Benefits
  - Public Safety Officer's Education Assistance
  - Physical Disaster Loans
  - Cora Brown Fund
  - Assistance for Victims of Crime
  - Crisis Counseling
  - Disaster Legal Services

# CURRENT ISSUES IN EMERGENCY MANAGEMENT

October 6-7, 2009

- Small Business & Nonprofits
- Economic Injury Disaster Loans
- Physical Disaster Loans
- Emergency Loans for Farms
- Public Assistance Grants

# CURRENT ISSUES IN EMERGENCY MANAGEMENT

October 6-7, 2009

- General Assistance
- Temporary Assistance for Needy Families
- Workforce Investment Act Training
- Medicaid
- State Children's Health Insurance
- Social Services Block Grants
- Community Development Block Grants
- Economic Development Admin. Programs
- Army Corps of Engineers Programs

An iceberg floating in the ocean. The tip of the iceberg is visible above the water surface, while the much larger, jagged base is submerged below. The water is a deep blue, and the sky is a lighter blue with some clouds. The overall image serves as a metaphor for hidden or underlying issues.

**CURRENT ISSUES IN  
EMERGENCY MANAGEMENT**  
October 6-7, 2009

**QUESTIONS**



# Issues for Fiscal Year 2009-10

An iceberg floating in the ocean. The tip of the iceberg is visible above the water line, while the much larger, submerged portion is below. The background is a blue sky with light clouds and a dark blue sea.

- Promote staff retention in all programs
- Offer more opportunities for PAC staff to participate in training
- Encourage local debris management planning by revising evaluation criteria for the debris management portion of the CEMP
- Implement memorandums of understanding between the State and Federal environmental agencies regarding issues such as vector control and historic preservation
- Build Disaster Reservist cadre through aggressive but selective recruitment
- Obtain a final determination on whether Essential Services Centers in undeclared events are reimbursable – CAT B
- Obtain a final resolution on the formaldehyde and Direct Housing issue

# Considerations for 2010-11 Budget Development

An iceberg floating in the ocean, with a small portion visible above the water and a much larger portion submerged below. The background is a blue sky with light clouds and a dark blue sea.

- Budget and assign personnel resources to continue to process and close out Recovery projects for older disasters
- Provide funding for personnel (specialists) to attend continuing education training within their area of concentration
- Budget for equipment necessary to successfully complete emergency missions in a timely manner (additional GPS units, go kits, reptile protection, etc...)
- The FEMA imposed limit of 3.34% SMAC funds precludes the ability to staff open positions - OPS personnel or contractors

