

REMCS

Regional Emergency Management Collaboration System



REMCS

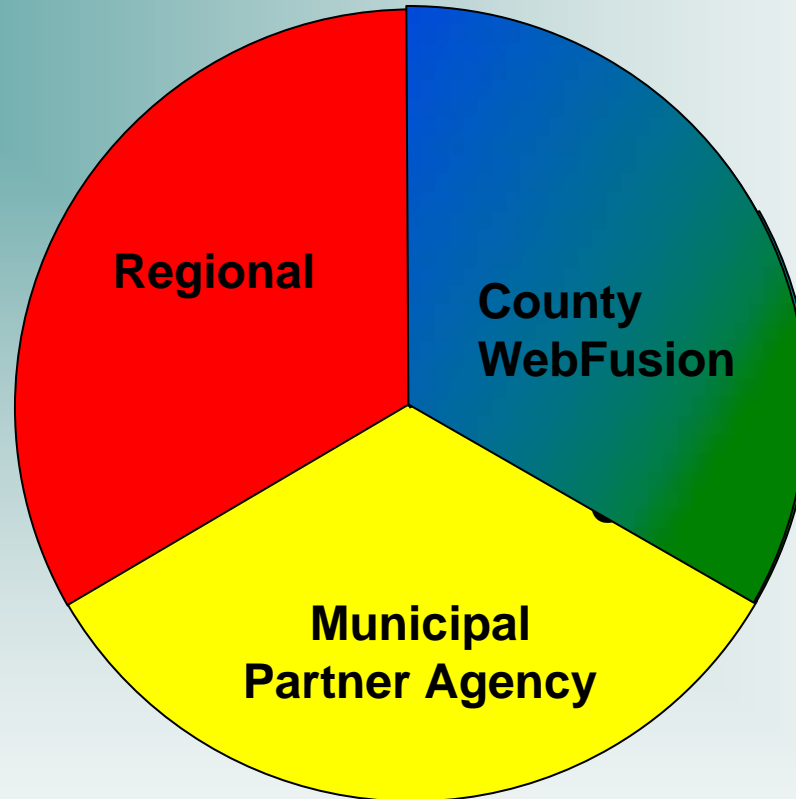
What is REMCS?

REMCS (Regional Emergency Management Collaboration System) is designed to provide users a place to collaborate on public safety information at the local, county and regional levels using WebEOC.

What is WebEOC?

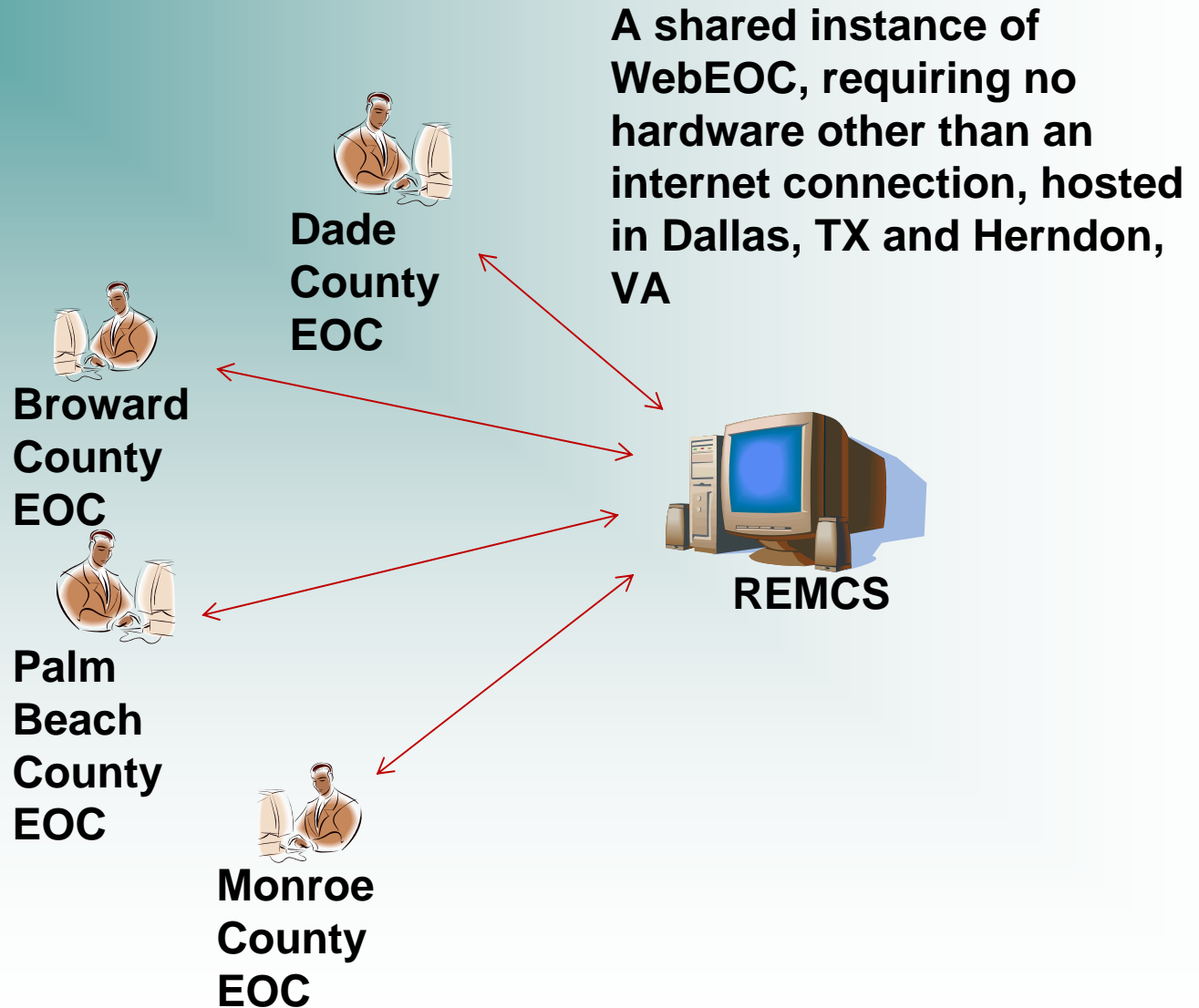
“WebEOC is a boundless collaboration tool that creates a common operating picture, enabling first responders and emergency managers to share information and make sound decisions quickly.”

The Concept



In phase I a regional instance of WebEOC connects the Region.
In Phase II county instances are linked via the WebFusion Server.
In Phase III Municipal and Partner agencies are integrated.

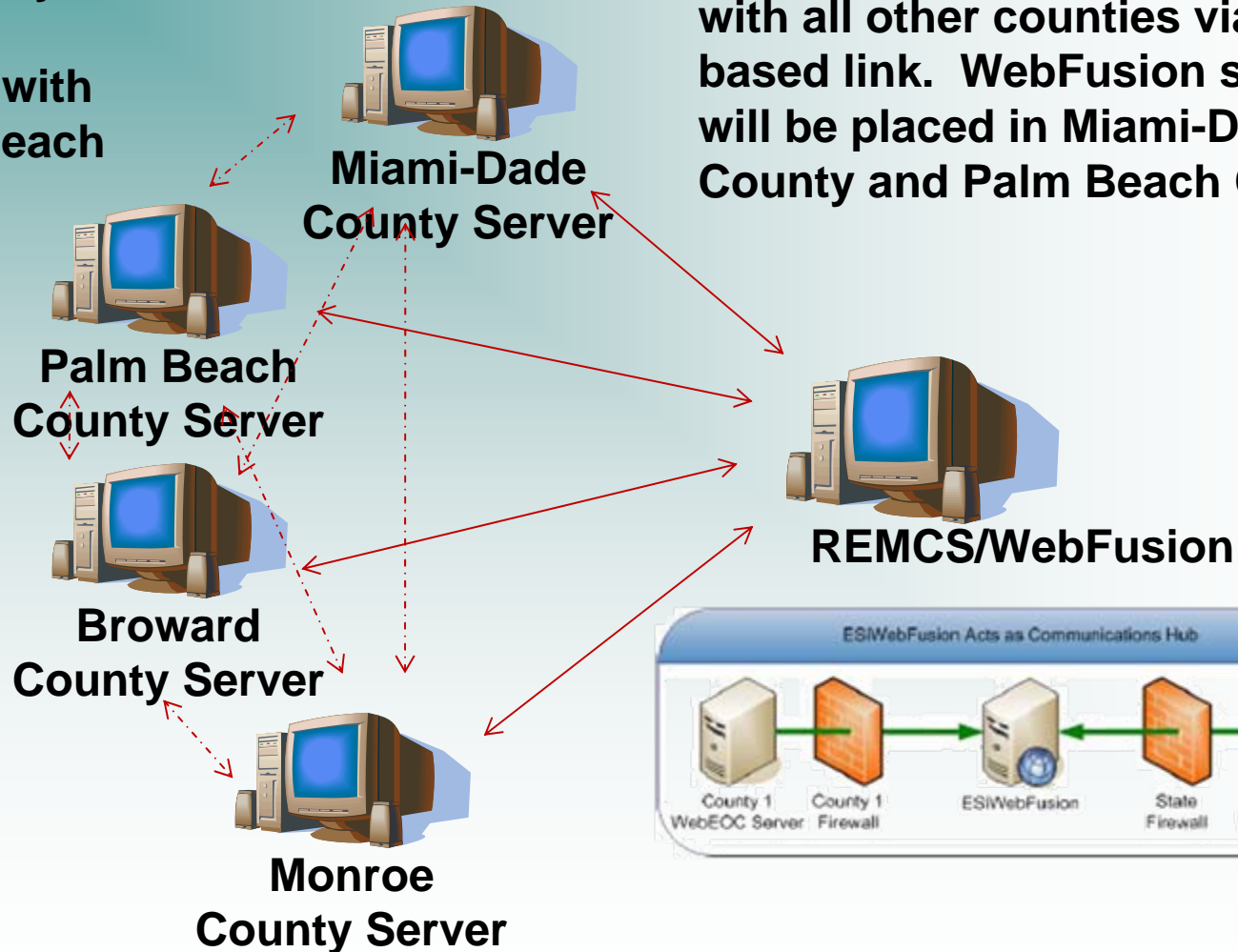
Phase 1 - Regional System



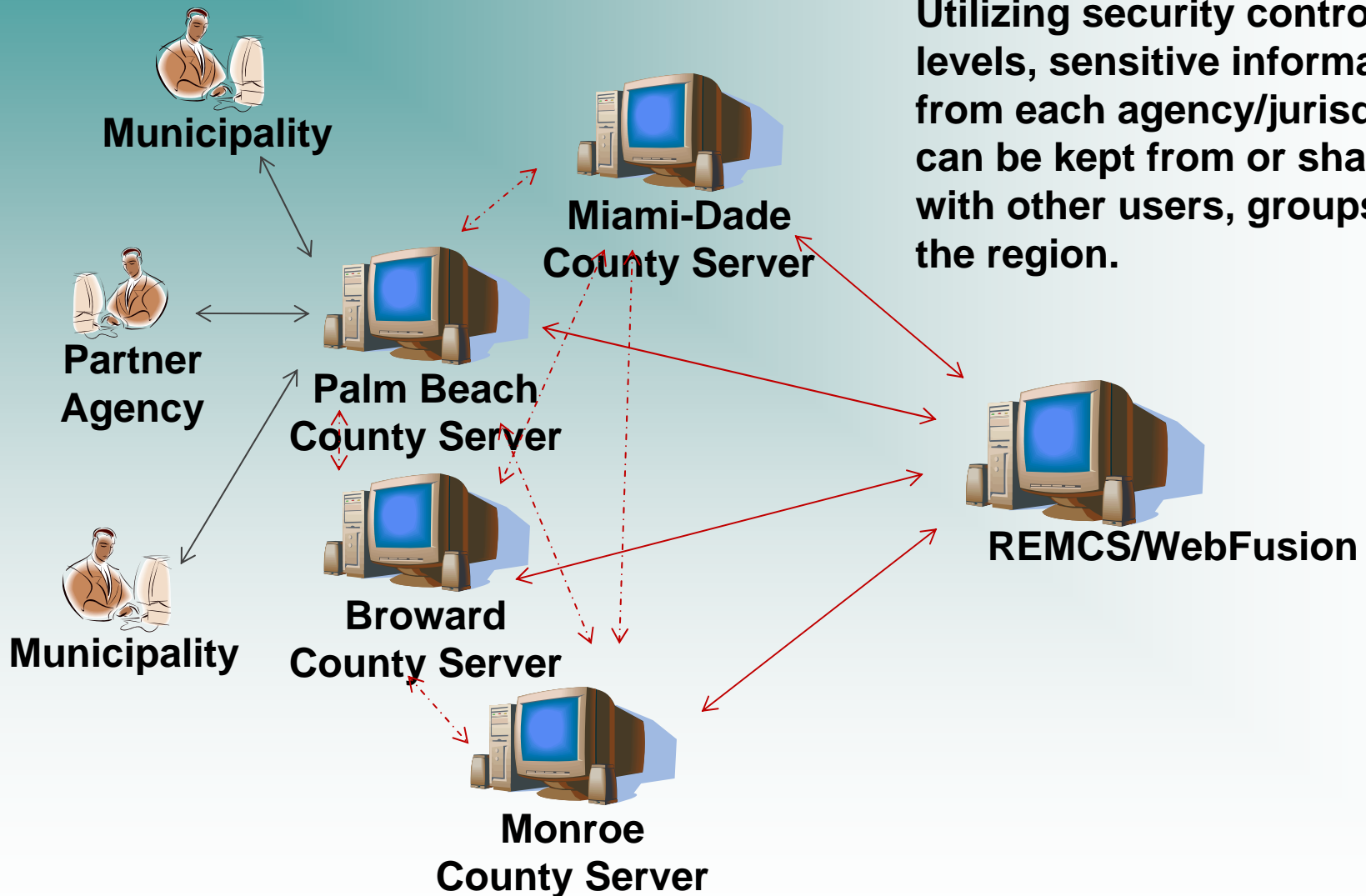
Phase 2 – County Rollout

By having the site hosted by the provider, challenges with firewalls in each county are avoided.

WebFusion allows each county instance to share information with all other counties via a Web based link. WebFusion servers will be placed in Miami-Dade County and Palm Beach County.



Phase 3 – Municipal/Partner Integration



Utilizing security controls at all levels, sensitive information from each agency/jurisdiction can be kept from or shared with other users, groups, or the region.

Timeline (May vary based on available funding)

Phase 1

- **Admin Training Oct 08**
- **Users entered Oct 08**
- **System customization
Nov 08**
- **User training Nov 08**
- **System populated
Nov 08**
- **Fully Operational
Dec 08**

Phase II

- **County System installed
Begin Jan 09**
- **System Customization
Feb 09**
- **WebFusion Mar 09**
- **System Populated May
09**
- **Fully Operational May
09**

Direction and Control

- **Executive Committee**

Charles Tear, Palm Beach - **Douglas Bass**, Miami-Dade

Chuck Lanza, Broward – **Irene Toner**, Monroe

Randy Cross, UASI

- **Steering Committee**

Jonathan Lord, Miami-Dade – **Matt Cronin**, Palm Beach

Bill Johnson, Broward - **Jose Tezanos**, Monroe

Jeff Maslan, UASI

- **Technical Committee**

IT technical specialists from each County

Questions?

